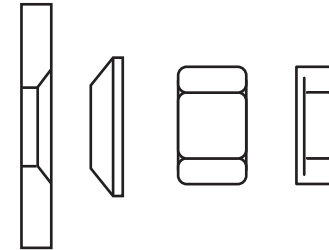
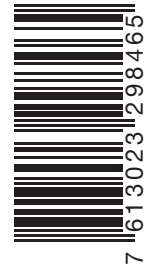


2 Dynamic/filling set A4 M16
381056



OPEN - OUVRIER - ABRIR
OPEN for usage information and precautions
Ouvrir pour information et précautions
Abrir para instrucciones de uso y precauciones

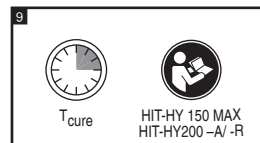
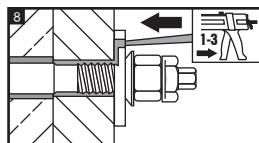
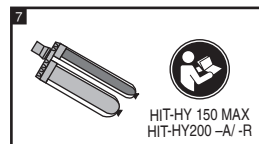
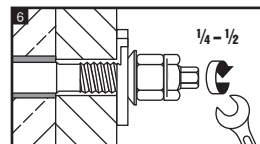
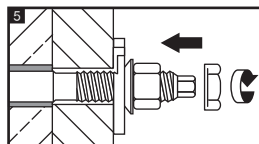
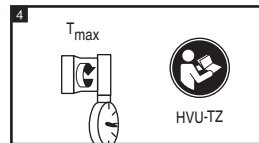
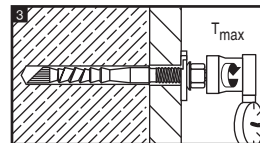
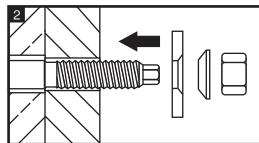
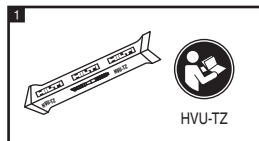


2008715-10.2014

Made in Germany
Hilti = trademark of Hilti Corp., Schaun, LI



HVU-TZ



HDA-T/HDA-P

